

Spatial Insights, Inc.

A Geographic Information Services Company



Batch Map Production for MapInfo™

*batch map
production made
easy*

*create consistent
maps fast*

*runs directly within
MapInfo
Professional™*

*create separate
maps for any/all
objects in a table*

*optionally group
objects based on
a column*

*automatic
buffering around
objects*

*unique title, scale
bar, and north
arrow for each
map*

*output to a
printer, or create
PDF, WMF, JPG, or
BMP graphics*

*creates a
MapInfo™
Workspace for
every map*

MapInfo™ is a registered trademark of the MapInfo Corporation.

The Challenge:

Did you ever need to create a series of related maps with a consistent look and feel? Have you spent hours or days generating a location map for every store in your chain? Have you ever needed to create a separate thematic map for every one of your sales territories, or produce maps showing population distribution for every ZIP Code in a state?

Commonly these processes require setting up a workspace, repetitively zooming and panning to each specific object, changing titles in your layout, and printing or saving your map.

The process can be time consuming and extremely tedious. To-date, there was no fast and easy way to cycle through the data in a systematic and consistent way.

The Solution:

Spatial Insights' Map-O-Matic application was developed in response to client driven projects that required the production of maps with a consistent look and feel from within MapInfo Professional™.

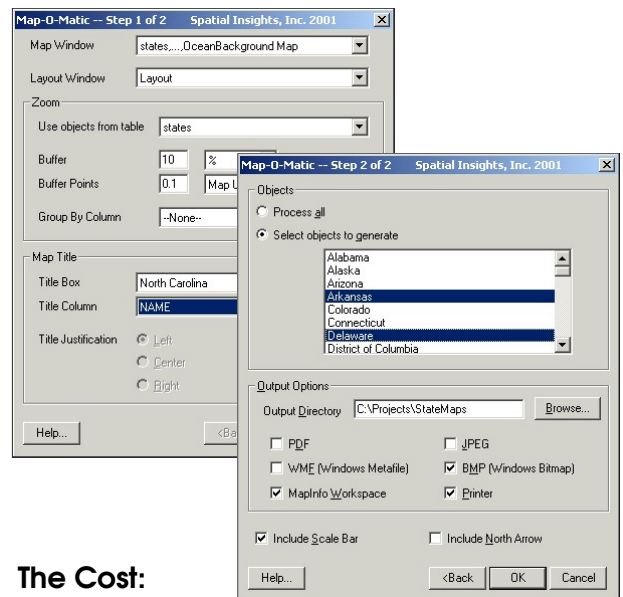
Map-O-Matic starts with a workspace you design. Using a simple menu-driven interface, you:

- Specify the layout and map window you want to use;
- Specify the table that contains the objects you want the maps based on;
- Specify the table column and text box to be used for the map title;
- Select the individual objects in the table to map, or select them all;
- Decide if you want a scale bar or north arrow on the maps, and
- Choose your output media options.

That's all there is to it!

Map-O-Matic automatically cycles through each of the objects you've selected and creates a separate map centered on that object. It works with all object types (polygons, lines, and point locations). Optionally, objects may be grouped during the map production process.

Output can be sent directly to a printer, or PDF, WMF, JPG, or BMP files can be generated. You can even save a MapInfo™ Workspace for each of the maps, in case you want to do some fine-tuning at a later time.



The Cost:

Map-O-Matic costs just \$695/copy. Site licenses and reseller opportunities are available.

For more information please contact:

Spatial Insights, Inc.

4938 Hampden Lane
PMB 338

Bethesda, MD 20814

Tel: 800-347-5291

Fax: 301-229-4479
sales@spatialinsights.com
www.spatialinsights.com