

Spatial Insights, Inc.

A Geographic Information Services Company

Elevation Data

30-meter resolution
elevation data

Seamless coverage

Pre-assembled by:

county

metropolitan
area (MSA)

custom
boundary

Formats include:

.DEM

.GRD

.MIG

Compatible with:

ArcInfo™

ArcView™

MapInfo
Professional™

Vertical
Mapper™

deciBel Planner™

The Challenge:

Elevation data can be used in mapping and GIS systems for enhanced 3-D data visualization, slope and line-of-sight analyses, and site evaluation

The data have wide-ranging applicability within the real estate, environmental, and telecommunications industries.

High quality 30-meter elevation data have been compiled for most of the United States, but were only available in complicated government formats, packaged by map sheets.

Unfortunately, this poor packaging and lack of availability of the data in ready-to-load GIS-compatible formats have rendered this data underutilized.

The Solution:

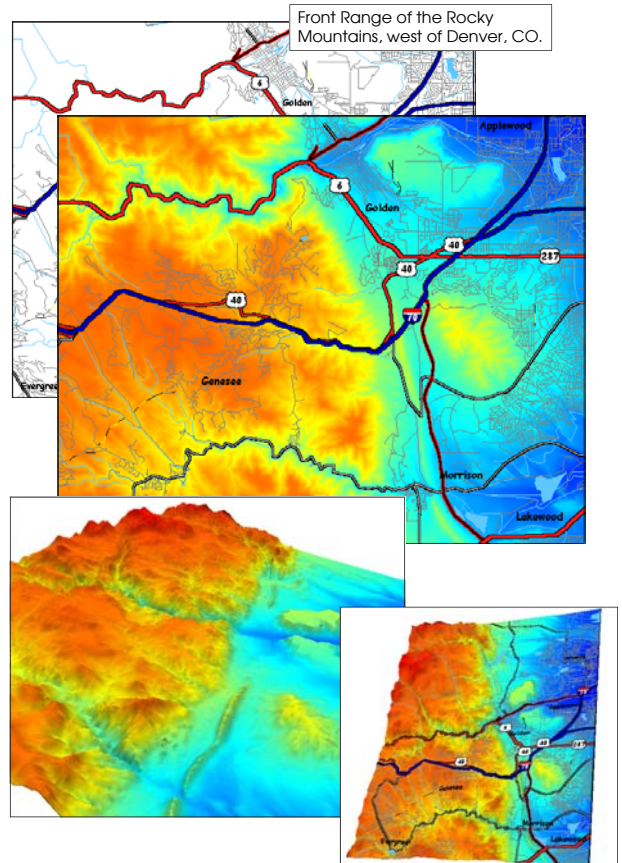
Spatial Insights 30-meter resolution Elevation Data have been seamlessly merged and systematically corrected for errors.

The data are available pre-packaged by county or metropolitan area (MSA). Data packaged by client-specified custom boundaries are also available.

The elevation data are offered in formats that are compatible with the major desktop mapping GIS systems on the market today, including: ArcInfo™, ArcView™, MapInfo Professional™, Vertical Mapper™, and the deciBel Planner™ wireless telecommunications planning tool.

With Spatial Insights Elevation Data, it's as easy as "Load'n Go".

ArcInfo™ and ArcView™ are registered trademarks of the Environmental Systems Research Institute. MapInfo Professional™ is a registered trademark of the MapInfo Corporation. Vertical Mapper™ and deciBel Planner™ are registered trademarks of Northwood Technologies, Inc.



The Cost:

Size Level	Small	Med	Large	V. Large
County	\$295	\$345	\$395	\$495
MSA	\$495	\$545	\$595	\$695
Custom Area	Call for pricing			

Site licenses, multi-user, and reseller discounts are available.

For more information please contact:

Spatial Insights, Inc.

4938 Hampden Lane

PMB 338

Bethesda, MD 20184

Tel: 800-347-5291

Fax: 301-229-4479

sales@spatialinsights.com

www.spatialinsights.com